



MULTI-PURPOSE



Annual Report 2008



CONTENTS

1	Corporate Profile
2 - 3	Corporate Structure
4	Corporate Information
5	Financial Highlights
6 - 9	Directors' Profile
10 - 12	Chairman's Statement
13 - 15	Chairman's Statement (In Bahasa Malaysia)
16 - 17	Chairman's Statement (In Chinese)
18	Corporate Social Responsibility Statement
19 - 23	Corporate Governance Statement
24 - 25	Additional Corporate Disclosures
26	Statement On Directors' Responsibilities
27 - 31	Audit Committee Report
32 - 33	Statement On Internal Control
35 - 130	Directors' Report And Audited Financial Statements
131 - 133	Top 10 List Of Properties Owned By Multi-Purpose Holdings Group
134 - 136	Analysis Of Equity Securities
137 - 140	Notice Of Annual General Meeting Form Of Proxy

Corporate Profile

Multi-Purpose Holdings Berhad (“MPHB”), the holding company for the Multi-Purpose Group of Companies (the “Multi-Purpose Group”), was incorporated in 1975 and listed on the Bursa Malaysia Securities Berhad in 1982. Today, the Multi-Purpose Group is involved in the core businesses of:

- Financial Services
- Stockbroking, and
- Gaming

The Multi-Purpose Group’s commitment is towards

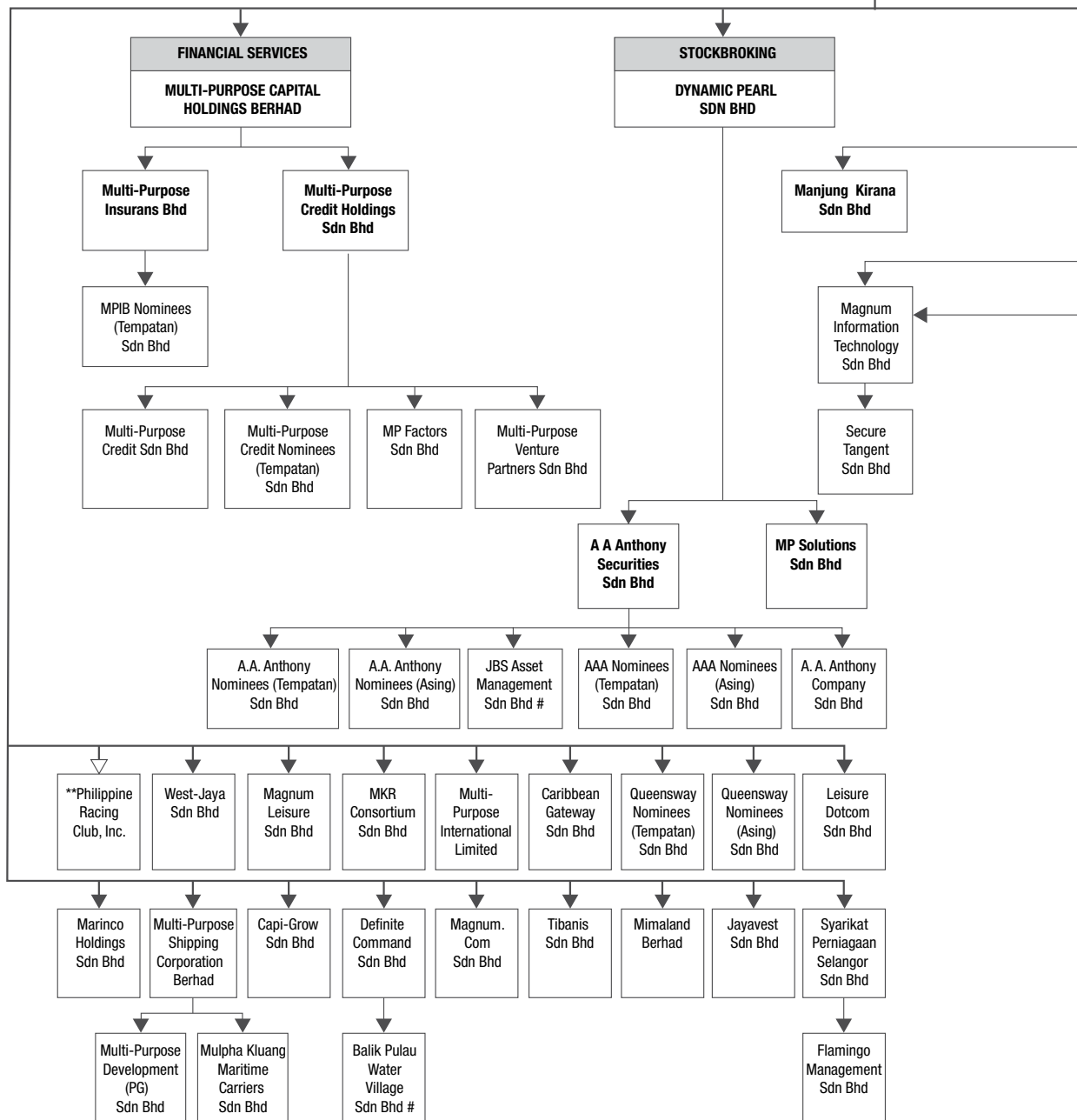
- the pursuit of excellence in its core businesses
- striving for value for its shareholders
- being a caring and fair employer and
- a socially responsible and accountable citizen

Corporate Structure

as at 31 March 2009

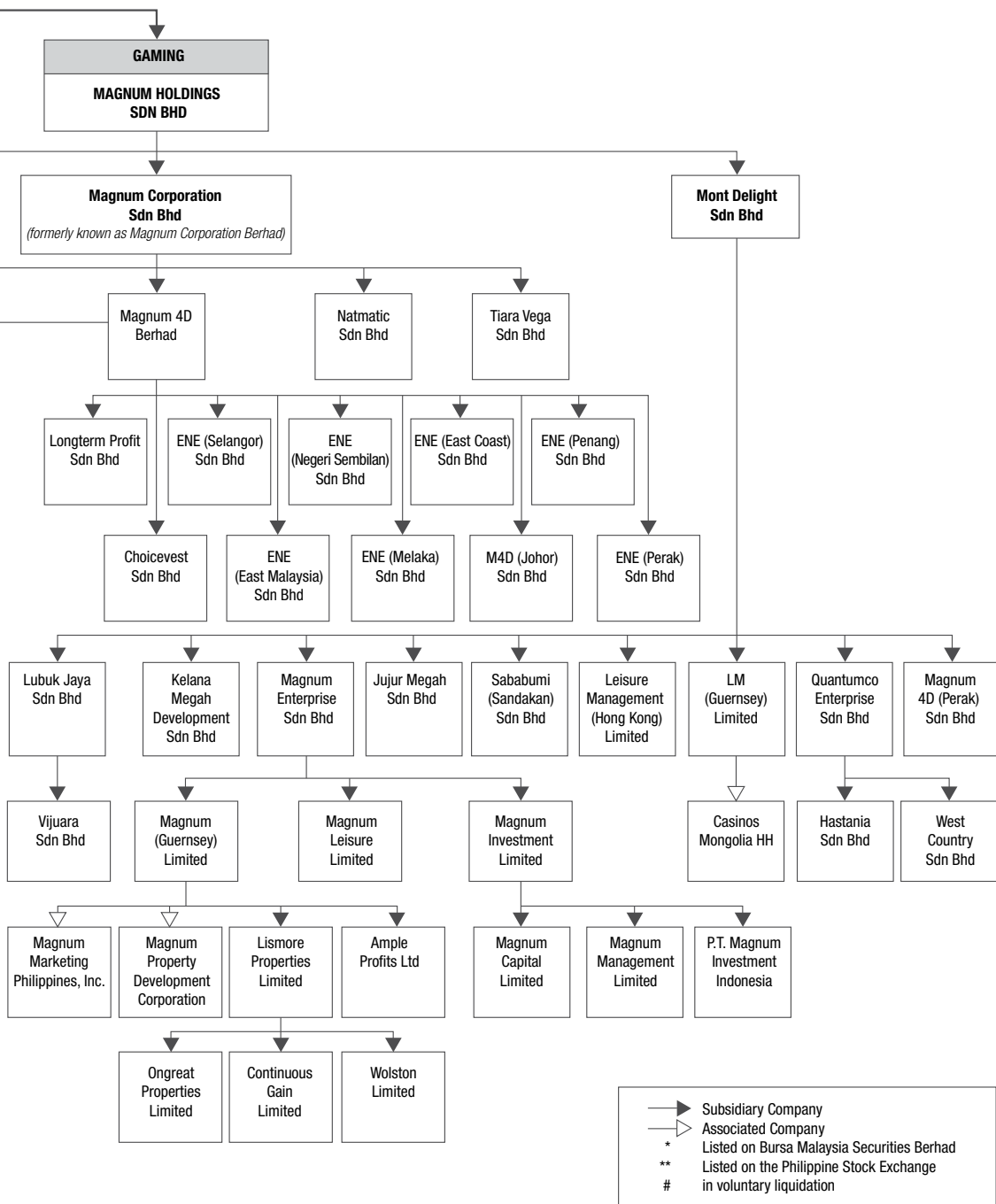


***MULTI-PURPOSE HOLDINGS BERHAD**



Corporate Structure

as at 31 March 2009



Corporate Information

DIRECTORS

Datuk Razman Md. Hashim
Dato' Surin Upatkoon
Mr Ng Kok Cheang
Mr Vijeyaratnam a/l V. Thamothearam Pillay
Dato' Lim Tiong Chin
Encik Sahibudeen bin Abdul Kader
Dato' Wong Puan Wah

Independent Non-Executive Chairman
Non-Independent Managing Director
Non-Independent Executive Director
Non-Independent Non-Executive Director
Non-Independent Non-Executive Director
Independent Non-Executive Director
Independent Non-Executive Director

MANAGEMENT

Dato' Surin Upatkoon
Managing Director

Mr Ng Kok Cheang
Executive Director

Ms Kheoh And Yeng
Chief Operating Officer

SECRETARY

Lim Kong Yow (*MIA 4979*)

REGISTERED OFFICE

39th Floor, Menara Multi-Purpose
Capital Square
No. 8, Jalan Munshi Abdullah
50100 Kuala Lumpur
Telephone No.: 603-26948333
Fax No.: 603-26946849

REGISTRAR

Multi-Purpose Holdings Berhad
39th Floor, Menara Multi-Purpose
Capital Square
No. 8, Jalan Munshi Abdullah
50100 Kuala Lumpur
Telephone No.: 603-26948333
Fax No.: 603-26948571

BURSA MALAYSIA SECURITIES BERHAD STOCK NUMBER

MPHB 3859

INTERNATIONAL SECURITIES IDENTIFICATION NUMBER (ISIN)

MPHB MYL3859OO005

REUTERS CODE

MLPM.KL

WEBSITE

www.mphb.com.my

E-MAIL

Info@mphb.com.my

AUDITORS

Messrs Ernst & Young

PRINCIPAL BANKERS

CIMB Bank Berhad
Malayan Banking Berhad

Financial Highlights

	2008 RM'000	2007 RM'000 (Restated)	2006 RM'000	2005 RM'000	2004 RM'000
GROUP ASSETS EMPLOYED					
Property, plant and equipment	201,164	274,757	260,819	227,652	222,357
Land held for property development	-	20,000	20,000	-	-
Investment properties	541,074	622,732	535,954	-	-
Prepaid land lease payments	3,955	585	2,608	-	-
Long-term investments	272,351	701,006	797,369	1,307,695	1,455,427
Non-current assets classified as held for sale	242,332	-	242,933	-	-
Current assets	1,358,168	1,333,347	1,761,364	725,480	615,784
Intangible assets	3,026,795	814,060	564,128	29,579	35,924
	5,645,839	3,766,487	4,185,175	2,290,406	2,329,492
FINANCED BY					
Share capital	962,427	954,586	953,867	953,867	953,867
Reserves	952,961	874,814	455,490	303,812	405,240
Tresury shares	(50,871)	-	-	-	-
Minority interests	518,025	807,805	1,302,191	110,782	110,340
Total equity	2,382,542	2,637,205	2,711,548	1,368,461	1,469,447
Total liabilities	3,263,297	1,129,282	1,473,627	921,945	860,045
	5,645,839	3,766,487	4,185,175	2,290,406	2,329,492
GROUP RESULTS					
Profit/(Loss) before taxation	346,508	573,742	194,739	(109,938)	(92,181)
Taxation	(63,588)	(82,850)	(25,835)	(4,104)	(46,186)
Profit/(Loss) for the year from continuing operations	282,920	490,892	168,904	(114,042)	(138,367)
(Loss)/Profit for the year from discontinuing operations	(83,644)	80,842	-	-	-
Profit/(Loss) for the year	199,276	571,734	168,904	(114,042)	(138,367)
Minority interests	(40,658)	(186,894)	(8,983)	(442)	(2,436)
Profit/(Loss) attributable to shareholders	158,618	384,840	159,921	(114,484)	(140,803)
SELECTED RATIOS					
Earnings/(Loss) per share (sen)	16.7	40.3	16.8	(12.0)	(14.8)
Net assets per share (RM)	2.03	1.92	1.48	1.32	1.42